

Mr. Foofs the Polar Bear Plush Pattern

www.fluffmonger.com

Difficulty: ■■■□□□□□□□

Finished height (including ears): 9.5 in (24 cm) tall

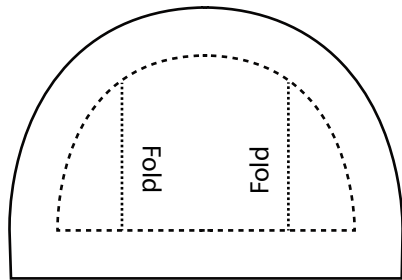


Selling Items Made with this Pattern or Creating Derivative Works

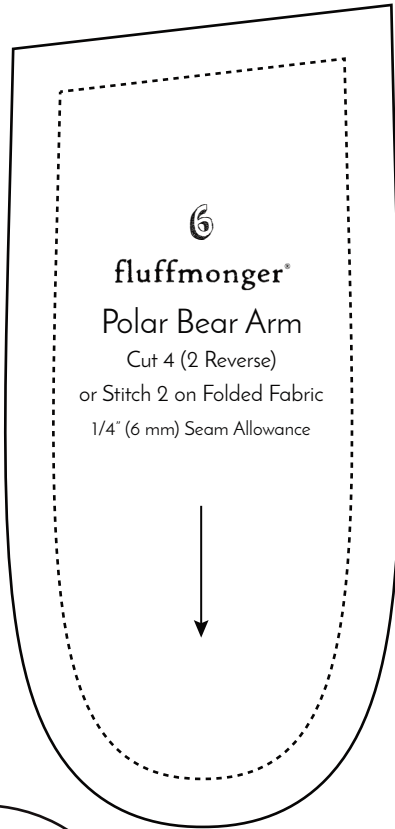
This free pattern may be used to create handmade toys to sell, but items may not be mass-produced. Please give credit to Fluffmonger with "pattern by Fluffmonger" and a link to my website, www.fluffmonger.com on your tags and listings. If you modify the pattern or use certain pieces to create another pattern, still credit Fluffmonger as these are considered derivative works.

This design is protected by federal copyright law (© 2018) and may not be reproduced in any form. Reproduction of this design, either in part or whole, or distribution of this pattern electronically or by hard copy is strictly prohibited.

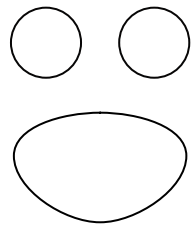
Test Squares
 Purple = 1 in²
 Green = 2.5 cm²



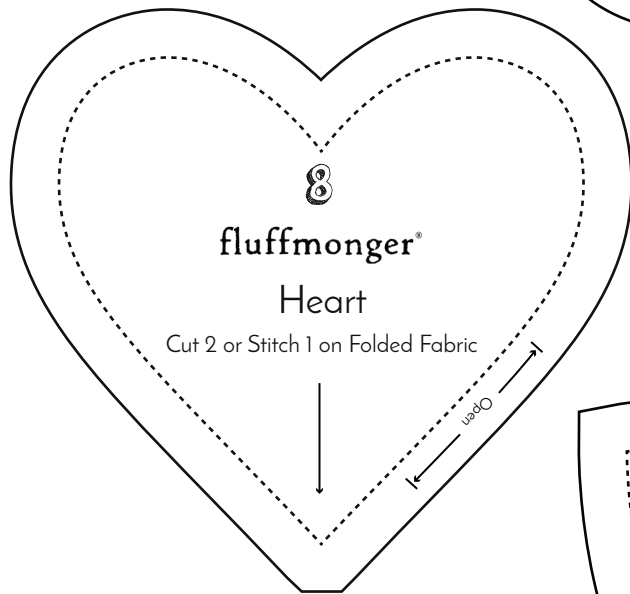
4
 Polar Bear Ear
 Cut 4 or Stitch 2 on Folded Fabric



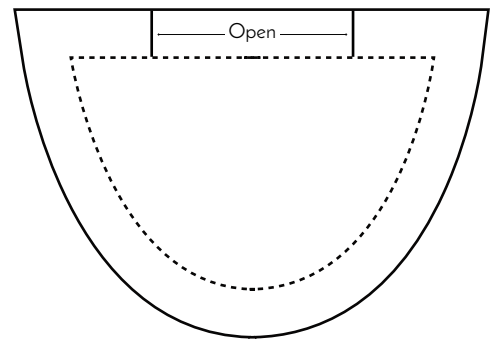
6
 fluffmonger®
 Polar Bear Arm
 Cut 4 (2 Reverse)
 or Stitch 2 on Folded Fabric
 1/4" (6 mm) Seam Allowance



7
 fluffmonger®
 Polar Bear Tail
 Cut 2 or Stitch 1 on Folded Fabric
 1/4" (6 mm) Seam Allowance

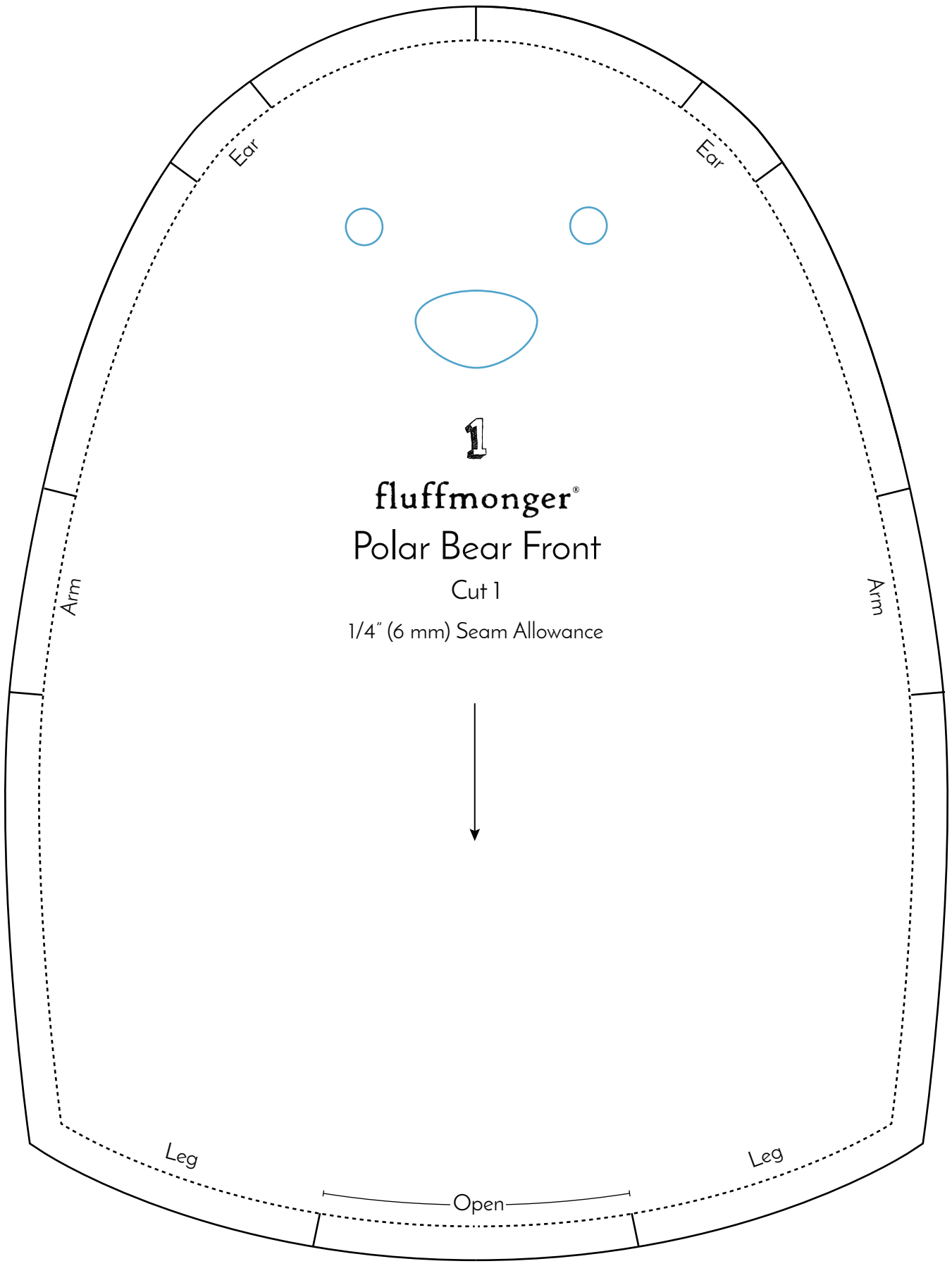


8
 fluffmonger®
 Heart
 Cut 2 or Stitch 1 on Folded Fabric



5
 fluffmonger®
 Polar Bear Leg
 Cut 4 (2 Reverse)
 or Stitch 2 on Folded Fabric
 1/4" (6 mm) Seam Allowance

	Stitch Line
	Cut Line
	Grainline/Nap
	Match Pieces



3

fluffmonger®
Polar Bear Back

Cut 1

1/4" (6 mm) Seam Allowance



Share Your Polar Bear!



I'd love to see what you make with this pattern!
Share your photo with Fluffmonger on social media or
post it in my Fluffmonger Patterns Group on Facebook!
<http://www.facebook.com/groups/fluffmonger-patterns>

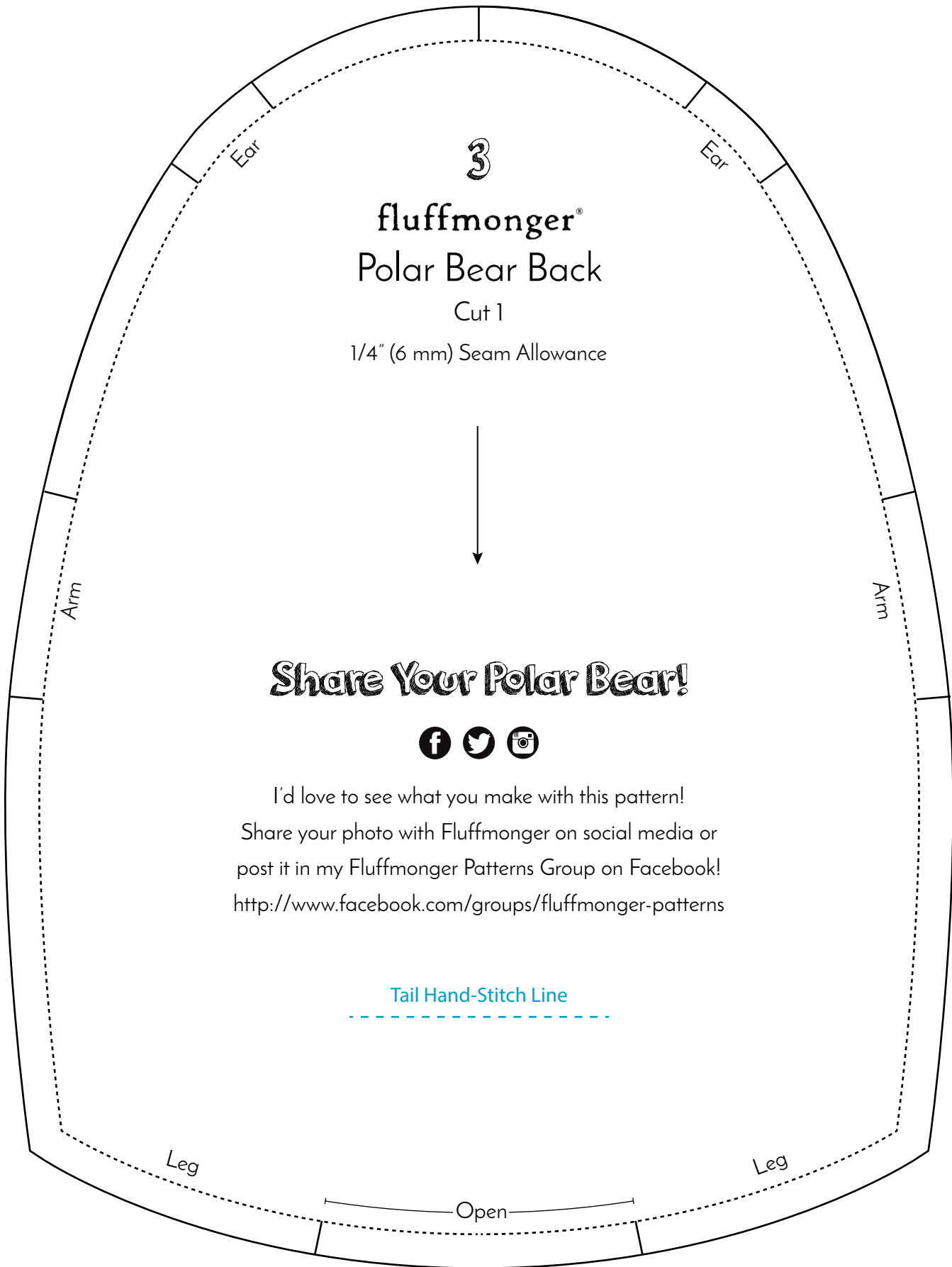
Tail Hand-Stitch Line



Leg

Leg

Open

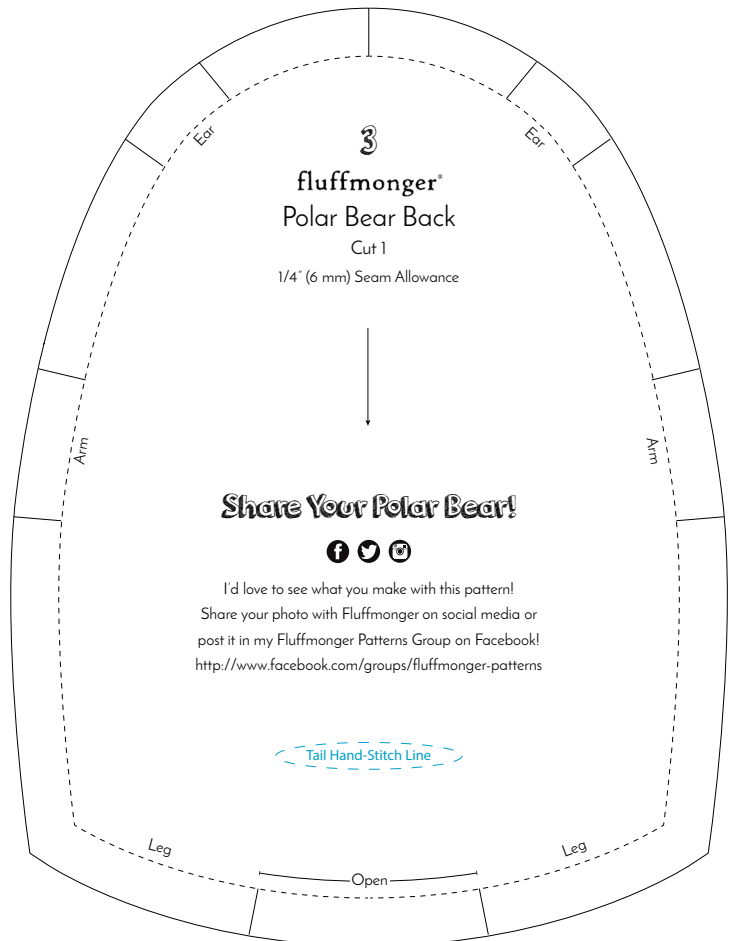
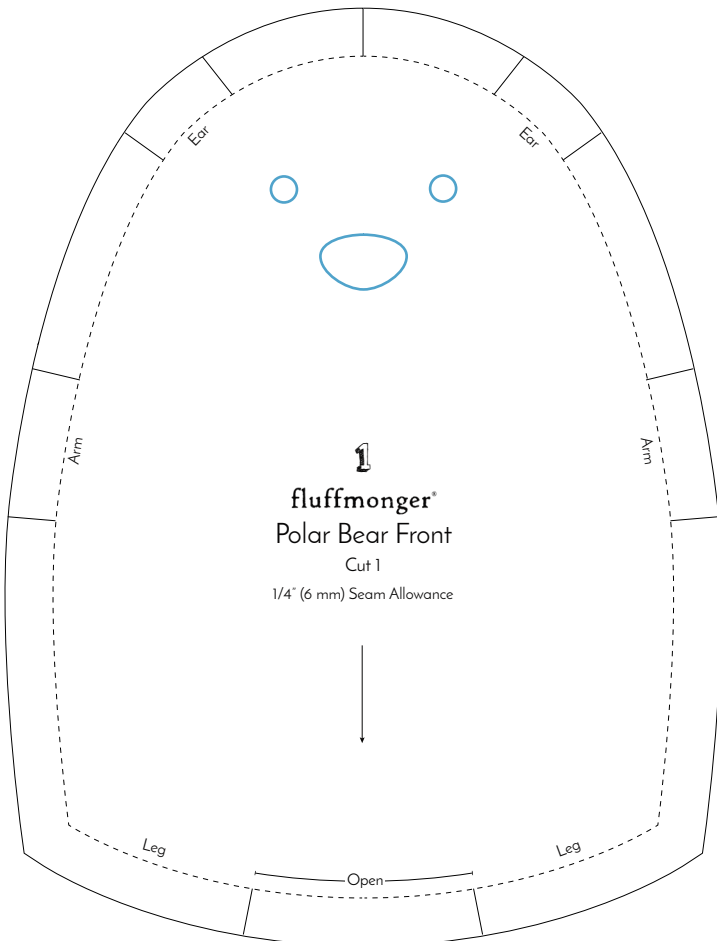
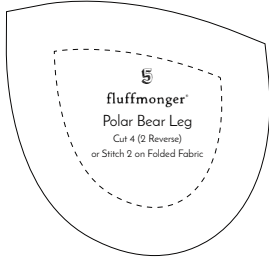
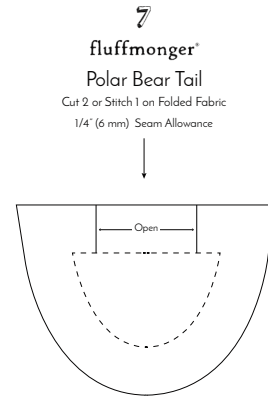
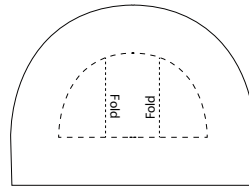
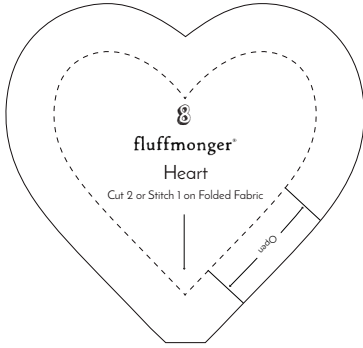


Tiny Polar Bear Plush Pattern

www.fluffmonger.com

Finished height (including ears): 5 in (13 cm) tall

Difficulty: ■■■■■□□□□□□



Share Your Polar Bear!



I'd love to see what you make with this pattern!
Share your photo with Fluffmonger on social media or
post it in my Fluffmonger Patterns Group on Facebook!
<http://www.facebook.com/groups/fluffmonger-patterns>

Tail Hand-Stitch Line